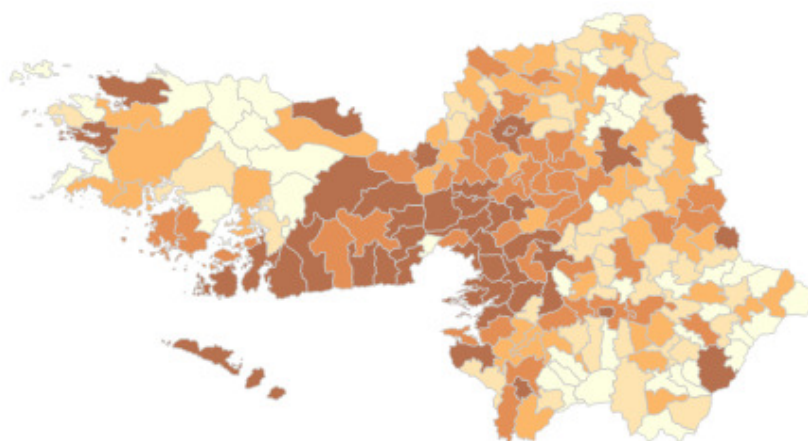
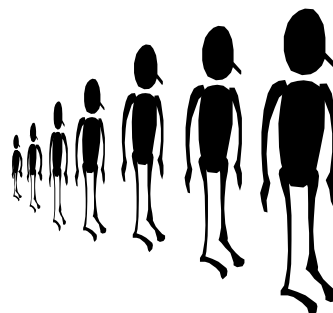


## Census 2011 – Results for County Galway

### Population Results



## Table of Contents

	<b>Page</b>
Summary	3
Table 1	Population & Change in Population 2006 - 2011 4
Table 2	Population & Change in Population 2006 – 2011 by Electoral Area 4
Figure 1	Population Growth for County Galway 1991 - 2011 5
Table 3	Components of Population Change in Galway City, Galway County, Galway City & County and the State, 2006 - 2011 5
Table 4	Percentage of Population in Aggregate Rural & Aggregate Town Areas in 2006 & 2011 6
Figure 2	Percentage of Population in Aggregate Rural & Aggregate Town Areas in County Galway 2006 & 2011 6
Table 5	Percentage of Males & Females 2006 & 2011 6
Table 6	Population of Towns* in County Galway, 2002, 2006 & 2011 & Population Change 7
Table 7	Largest Towns in County Galway 2011 10
Table 8	Fastest Growing Towns in County Galway 2006 - 2011 10
Table 9	Towns Most in Decline 2006 – 2011 11
Table 10	Population of Inhabited Islands off County Galway 11
Map 1	Population of EDs in County Galway 2011 12
Map 2	% Population Change of EDs in County Galway 2006 - 2011 12
Table 11	Fastest Growing EDs in County Galway 2006 – 2011 13
Table 12	EDs most in Decline in County Galway 2006 - 2011 14
Appendix 1	Population of EDs in County Galway 2006 & 2011 & Population Change 15
Appendix 2	% Population Change of all Local Authority Areas 21
Appendix 3	Average Annual Estimated Net Migration (Rate per 1,000 Pop.) for each Local Authority Area 2011 22

## Summary

### Population of County Galway

- The population of County Galway (excluding the City) in 2011 was 175,124
- There was a 10% increase in the population of County Galway between 2006 and 2011. This is more than the average for the state of 8.2%
- County Galway Local Authority Area had the 10<sup>th</sup> largest growth in population of 34 local authority areas.

### Population of Electoral Areas

- The Ballinasloe electoral area has seen the biggest increase in population between 2006 and 2011 at 25.6%
- The Oranmore electoral area saw the only decrease in population at -5.2%

### Components of population change

- Of the increase in population in Galway City, 124.7% of this was due to natural increase in population. This means that more people left the City than came to the City or there was a net emigration.
- Of the increase in population in County Galway 52.9% of this was due to natural increase and 47% was due to net migration. Therefore more people came to the County than left the County.
- Of the 34 local authority areas County Galway had the 10<sup>th</sup> highest average annual estimated net migration (Rate per 1,000 Pop.). This is where more people are coming to the County than leaving.

### Rural vs Urban Areas

- County Galway is a very rural County with 77.4% of people living in rural areas compared to the state average of 38%.
- The proportion of people living in urban areas of County Galway increased in 2011 (22.6%) compared to 2006 (17.2%).

### Population of Towns in County Galway

- Tuam (8,242), Ballinasloe (6,577), Loughrea (5,062) and Oranmore (4,799) were the 4 largest towns in County Galway in 2011.
- Furbo (76%), Claregalway (64.2%), Craughwell (60.6%) and Clarinbridge (51.4%) were the 4 fastest growing towns in County Galway between 2006 and 2011.
- Monivea (-12.2%), Eyrecourt (-9.6%), Ahascragh (-7.2%) and Woodford (-6.3%) were the 4 towns most in population decline between 2006 and 2011.

**Table 1 Population & Change in Population 2006 - 2011**

Area	2006	2011	Actual Change	% Change
Galway City	72,414	<b>75,529</b>	+3,115	+4.3%
Galway County	159,256	<b>175,124</b>	+15,868	+10%
<b>Total Galway</b>	231,670	<b>250,653</b>	+18,983	+8.2%
State	4,239,848	<b>4,588,252</b>	+348,404	+8.2%

- There was a 10% increase in the population of County Galway between 2006 and 2011. This is more than the average for the state of 8.2%
- County Galway Local Authority Area had the 10<sup>th</sup> largest growth in population of the 34 Local Authority areas. See Appendix 2.

**Table 2 Population & Change in Population 2006 – 2011 by Electoral Area**

Electoral Area	2006	2011	Actual Change	% Change	% of Total Population 2011
Ballinasloe	22,003	27,625	5,622	25.6%	15.8%
Tuam	35,153	39,132	3,979	11.3%	22.3%
Loughrea	38,766	43,328	4,562	11.8%	24.7%
Oranmore	27,230	25,801	-1,429	-5.2%	14.7%
Connemara	36,104	39,238	3,134	8.7%	22.4%
<b>Galway County</b>	159,256	175,124	15,868	10.0%	

- The Ballinasloe electoral area has seen the biggest increase in population at 25.6%
- The Oranmore electoral area saw the only decrease in population at -5.2%

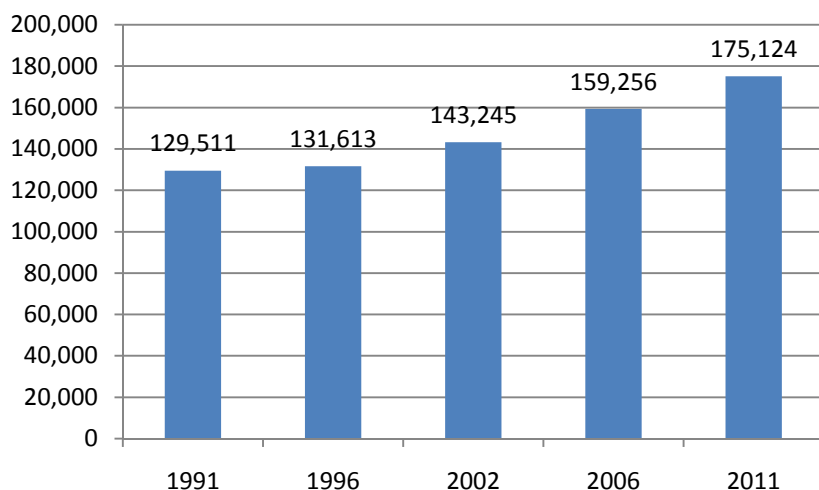
It should be noted that there was a change in electoral area boundaries prior to the 2009 local elections:

- Ballinasloe Electoral Area lost 2 EDs but gained 8 EDs (net increase in population of 4,108)
- Oranmore Electoral Area lost 5 EDs (decrease in population of 5,173)
- Tuam Electoral Area lost 5 EDs but also gained 5 EDs, (net increase in population of 1,040)
- Loughrea Electoral Area lost 3 EDs but gained 2 EDs (net increase in population of 25)

**Table 3 Population by Constituency**

Constituency	2006	2011	Actual Change	% Change 2006 - 2011	Population per Dail Member
Galway East	100,629	<b>110,085</b>	+9,456	+9.4%	27,521
Galway West	131,041	<b>140,568</b>	+9,527	+7.3%	28,114

**Figure 1 Population Growth for County Galway 1991 - 2011**



- The population of County Galway has increased by 35.2% from 129,511 in 1991 to 175,124 in 2011

**Table 3 Components of Population Change in Galway City, Galway County, Galway City & County and the State, 2006 - 2011**

Area	Actual Change 2006 - 2011	Births	Deaths	Natural Increase *		Estimated Net Migration**	
				No	%	No	%
<b>Galway City</b>	+3,115	5,257	1,371	+3,886	124.7%	-771	-24.7%
<b>Galway County</b>	+15,868	14,392	5,994	+8,398	52.9%	7,470	47%
<b>Total Galway</b>	+18,983	19,649	7,365	+12,284	64.7%	6,699	35.3%
<b>State</b>	+348,404	367,191	141,079	+226,112	64.9%	122,292	35.1%

- Of the increase in population in Galway City, 124.7% of this was due to natural increase in population. This means that more people left the City than came to the City or there was a net emigration.
- Of the increase in population in County Galway 52.9% of this was due to natural increase and 47% was due to net migration. Therefore more people came to the County than left the County.
- Of the 34 local authority areas County Galway had the 10<sup>th</sup> highest average annual estimated net migration (Rate per 1,000 Pop.). This is where more people are coming to the County than leaving. See Appendix 3.

\*Natural Increase is the number of births minus the number of deaths

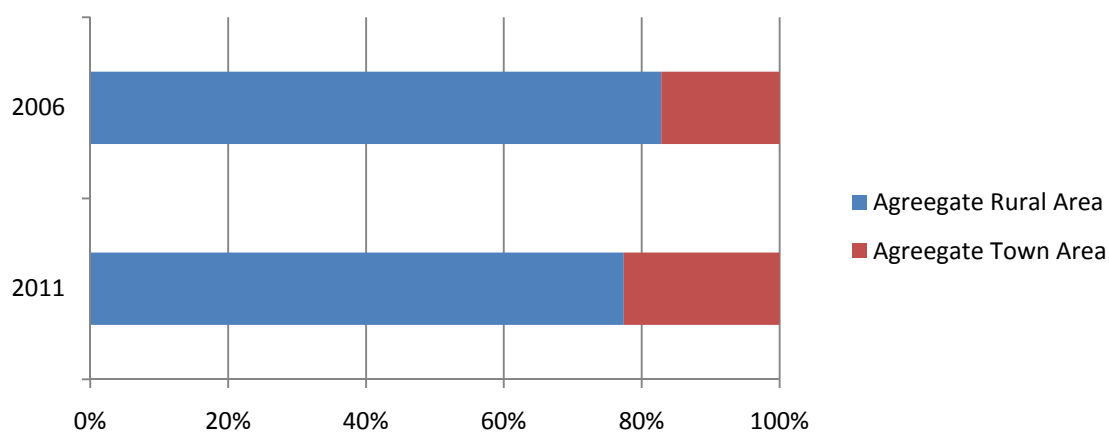
\*\* Net migration is a measure of the movements of persons into and out of the State. By deducting the natural increase in population at county level from the corresponding population change it is possible to derive county net migration figures. It is important to note that these figures will also include movement of persons between counties in Ireland.

**Table 4 Percentage of Population in Aggregate Rural & Aggregate Town Areas in 2006 & 2011**

Area	2006		2011	
	Aggregate Rural Area	Aggregate Town Area	Aggregate Rural Area	Aggregate Town Area
Galway County	82.8%	17.2%	77.4%	22.6%
State	39.3%	60.7%	38%	62%

- County Galway is a very rural County with 77.4% of people living in rural areas compared to the state average of 38%
- The proportion of people living in urban areas of County Galway increased in 2011 (22.6%) compared to 2006 (17.2%).

**Figure 2 Percentage of Population in Aggregate Rural & Aggregate Town Areas in County Galway 2006 & 2011**



**Table 5 Percentage of Males & Females 2006 & 2011**

Area	2006		2011	
	Male	Female	Male	Female
Galway City	48.1%	51.9%	48.3%	51.7%
Galway County	51.2%	48.8%	50.4%	49.6%
Total Galway	50.3%	49.7%	49.8%	50.2%
State	50%	50%	49.5%	51.5%

**Table 6 Population of Towns\* in County Galway, 2002, 2006 & 2011 & Population Change**

Population	Persons 2002	Persons 2006	Persons 2011	Change 2006 - 2011		Change 2002 - 2011	
				No.	%	No.	%
<b>Tuam Total</b>	3,104	6,885	8,242	1,357	19.7%	5,138	165.5%
Tuam	2,843	2,997	3,348	351	11.7%	505	17.8%
Environs of Tuam	2,789	3,888	4,894	1,006	25.9%	2,105	75.5%
<b>Ballinasloe Total</b>	6101	6,158	6,577	419	6.8%	476	7.8%
Ballinasloe, Ballinasloe Urban	5,984	6,049	6,449	400	6.6%	465	7.8%
Environs of Ballinasloe	117	109	128	19	17.4%	11	9.4%
<b>Loughrea, Loughrea Urban</b>	4,004	4,532	5,062	530	11.7%	1,058	26.4%
<b>Oranmore, Total</b>	1,692	3,513	4,799	1,286	36.6%	3,107	183.6%
Oranmore, Oranmore	1,446	2,611	3,255	644	24.7%	1,809	125.1%
Oranmore, Clarinbridge	218	600	1,183	583	97.2%	965	442.7%
Oranmore, Baile an Teampaill	28	302	361	59	19.5%	333	1189.3%
<b>Athenry</b>	2,154	3,205	3,950	745	23.2%	1,796	83.4%
<b>Gort</b>	1,776	2,734	2,644	-90	-3.3%	868	48.9%
<b>Clifden</b>	1,355	1,497	2,056	559	37.3%	701	51.7%
<b>Portumna</b>	1,235	1,377	1,530	153	11.1%	295	23.9%
<b>Oughterard</b>	1,209	1,305	1,333	28	2.1%	124	10.3%
<b>Maigh Cuilinn Total</b>	883	1,237	1,559	322	26%	676	76.6%
Maigh Cuilinn, Tulaigh Mhic Aodháin	405	525	673	148	28.2%	268	66.2%
Maigh Cuilinn, Maigh Cuilinn	478	712	886	174	24.4%	408	85.4%
<b>Headford</b>	703	760	889	129	17%	186	26.5%
<b>Mount Bellew</b>	667	746	784	38	5.1%	117	17.5%
<b>Baile Chláir Total</b>	562	741	1,217	476	64.2%	655	116.5%

Population	Persons 2002	Persons 2006	Persons 2011	Change 2006 - 2011		Change 2002 - 2011	
				No.	%	No.	%
Baile Chláir, An Carn Mór	185	262	700	438	167.2%	515	278.4%
Baile Chláir, Baile Chláir	377	479	517	38	7.9%	140	37.1%
<b>Ballygar</b>	642	689	660	-29	-4.2%	18	2.8%
<b>An Cheathrú Rua</b>	629	627	814	187	29.8%	185	29.4%
<b>Dunmore Total</b>	594	614	577	-37	-6.0%	-17	-2.9%
Dunmore, Dunmore South	460	499	475	-24	-4.8%	15	3.3%
Dunmore, Dunmore North	109	98	74	-24	-24.5%	-35	-32.1%
Dunmore, Carrownagur	25	17	28	11	64.7%	3	12%
<b>Kinvara</b>	447	563	620	57	10.1%	173	38.7%
<b>Glenamaddy</b>	457	502	500	-2	-0.4%	43	9.4%
<b>Lackaghbeg</b>	220	446	504	58	13.0%	284	129.1%
<b>Craughwell</b>	358	414	665	251	60.6%	307	85.8%
<b>Corrofin Total</b>	Not Available	380	549	169	44.5%		
Corrofin, Ballinderry	Not Available	112	159	47	42.0%		
Corrofin, Cummer	Not Available	268	368	100	37.3%		
Corrofin, Kilmoylan	Not Available	Not Available	22	22			
<b>Moylough</b>	236	357	503	146	40.9%	267	113.1%
<b>Monivea</b>	300	337	296	-41	-12.2%	-4	-1.3%
<b>Killimor</b>	345	318	335	17	5.3%	-10	-2.9%
<b>Cluain Bú</b>	351	306	381	75	24.5%	30	8.5%
<b>Woodford</b>	280	301	282	-19	-6.3%	2	0.7%
<b>Eyrecourt, Total</b>	354	292	264	-28	-9.6%	-90	-25.4%
<b>Cill Rónáin, Árainn</b>	270	259	297	38	14.7%	27	10%
<b>Clarinbridge</b>	173	257	389	132	51.4%	216	124.9%



Population	Persons 2002	Persons 2006	Persons 2011	Change 2006 - 2011		Change 2002 - 2011	
				No.	%	No.	%
<b>An Spidéal</b>	190	247	250	3	1.2%	60	31.6%
<b>Rosscahill, Wormhole</b>	Not Available	240	295	55	22.9%		
<b>Annaghdown</b>	Not Available	227	234	7	3.1%		
<b>Ahascragh</b>	271	221	205	-16	-7.2%	-66	-24.4%
<b>Roundstone</b>	239	207	245	38	18.4%	6	2.5%
<b>Na Forbacha</b>	319	175	308	133	76%	-11	-3.4%
<b>Conga</b>	36	49	55	6	12.2%	19	52.8%
<b>Milltown, Total</b>	Not Available	Not Available	199	199			
<b>Letterfrack, Total</b>	Not Available	Not Available	192	192			
<b>Williamstown</b>	Not Available	Not Available	155	155			

\*For census purposes towns fall into two types, those with legally defined boundaries called “legal towns” and those without legally defined boundaries called “census towns”.

Urban development has expanded beyond the boundaries of many legally defined towns. As a result people and communities for which these towns are the centre would be excluded if the coverage of the town were confined strictly to legally defined boundaries. Census geographic analysis is concerned with the overall size of population clusters and not simply with areas within legally defined boundaries. As a result where urban areas have extended beyond the legally defined town boundary, the CSO draws up new boundaries defining the suburban areas of Cities/Boroughs and environs of other legal towns for census purposes.

A census town is defined as a cluster of 50 or more occupied dwellings, with a maximum distance between any dwelling and the building closest to it of 100 metres, and where there was evidence of an urban centre (shop, school etc).

**Table 7 Largest Towns in County Galway 2011**

	<b>Town</b>	<b>Population 2011</b>
1	Tuam	8,242
2	Ballinasloe	6,577
3	Loughrea	5,062
4	Oranmore	4,799
5	Athenry	3,950
6	Gort	2,644
7	Clifden	2,056
8	Moycullen	1,559
9	Portumna	1,530
10	Oughterard	1,333
11	Claregalway	1,217

**Table 8 Fastest Growing Towns in County Galway 2006 - 2011**

	<b>Town</b>	<b>% Increase 2006 - 2011</b>	<b>Population 2006</b>	<b>Population 2011</b>
1	Furbo	76%	175	308
2	Claregalway	64.2%	714	1,217
3	Craughwell	60.6%	414	665
4	Clarinbridge	51.4%	257	389
5	Corofin	44.5%	380	549
6	Moylough	40.9%	357	503
7	Clifden	37.3%	1,497	2,056
8	Oranmore	36.6%	3,513	4,799
9	Carraroe	29.8%	627	814
10	Moycullen	26%	1,237	1,559
11	Cluain Bú	24.5%	306	381
12	Athenry	23.2%	3,205	3,950

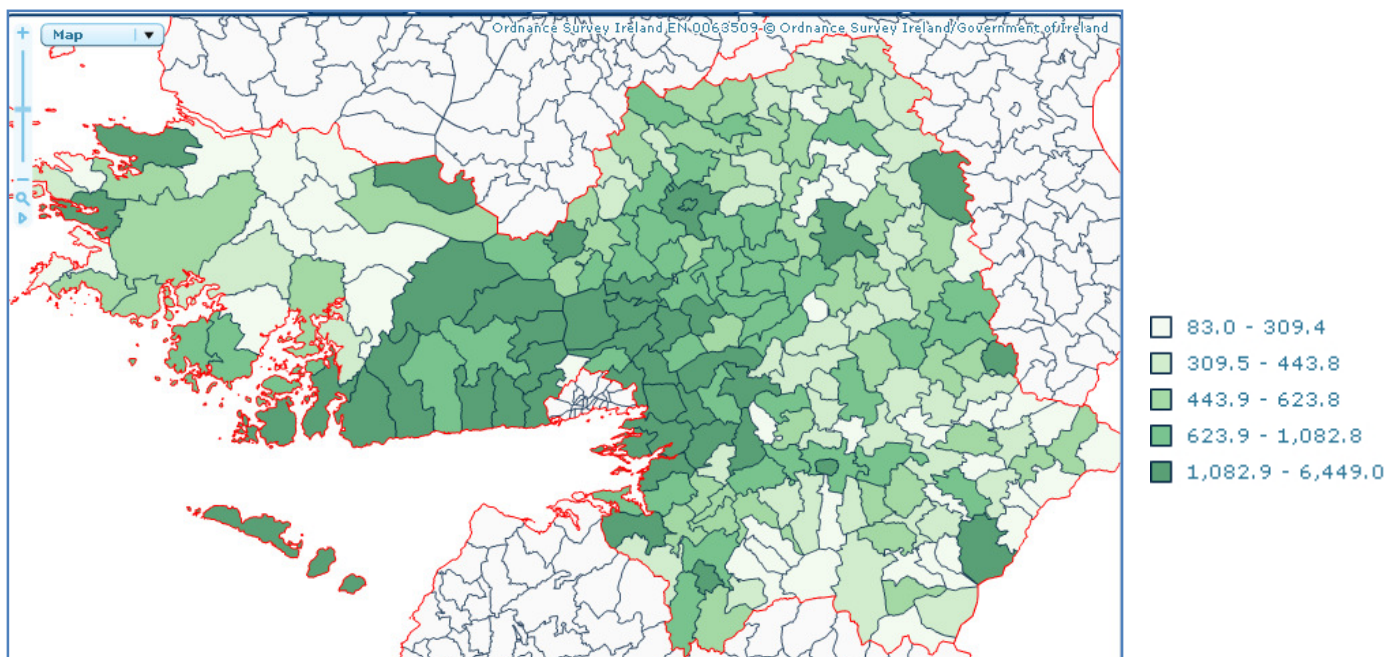
**Table 9 Towns Most in Decline 2006 – 2011**

	Town	% Decrease 2006 - 2011	Population 2006	Population 2011
1	Monivea	-12.2%	337	296
2	Eyrecourt	-9.6%	292	264
3	Ahascragh	-7.2%	221	205
4	Woodford	-6.3%	301	282
5	Dunmore	-6%	614	577
6	Ballygar	-4.2%	689	660
7	Gort	-3.3%	2,734	2,644

**Table 10 Population of Inhabited Islands off County Galway**

Area	Persons 2006	Persons 2011	Change 2006 - 2011	
			No	%
An Ros	12	20	8	66.7%
An tOileán Mór	1	2	1	100%
Árainn	824	845	21	2.5%
Eanach Mheáin	140	141	1	0.7%
Fornais	65	60	-5	-7.7%
Garmna	1,010	1,055	45	4.5%
Inis an Ghainimh	2	2	0	0%
Inis Bearachain	1	1	0	0%
Inishbofin	199	160	-39	-19.6%
Inisheer	247	249	2	0.8%
Inishmaan	154	157	3	1.9%
Inis Ní	28	43	15	53.6%
Inis Treabhair	1	1	0	0%
Inishturk	1	1	0	0.0
Leitir Mealláin	213	241	28	13.1%
Leitir Móir	528	548	20	3.8%
Maínis	140	145	5	3.6%
Omey	2	1	-1	-50%
Roisín an Chalaídh	7	10	3	42.9%
Tamhain Thoir	0	32	32	
Tamhain	0	14	14	

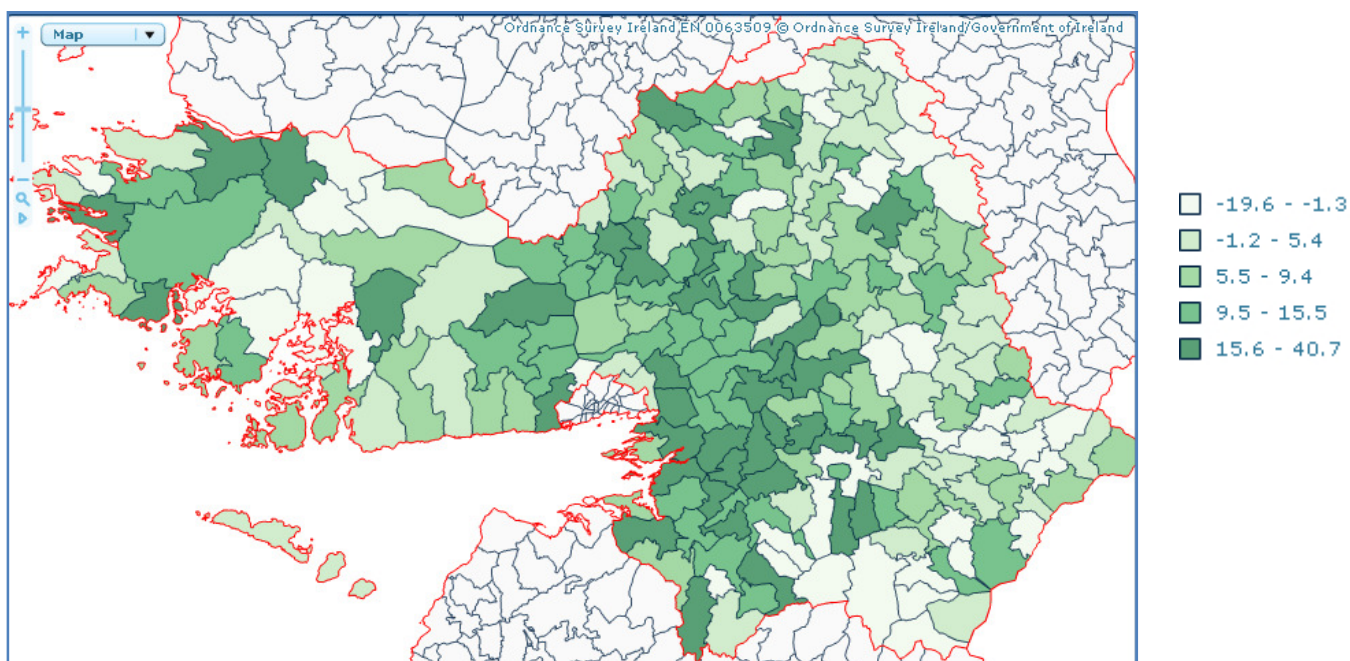
## Map 1 Population of EDs in County Galway 2011



Taken from Western Development Commission, Interactive Mapping and Data Analysis Toolkit

- The EDs with the largest populations are located close to the City
- For a full list of the populations of all EDs in County Galway see Appendix 1

## Map 2 % Population Change of EDs in County Galway 2006 - 2011



Taken from Western Development Commission, Interactive Mapping and Data Analysis Toolkit

- The fastest growing EDs can be seen closest to the City, especially to the north east and south east of the City.

**Table 11 Fastest Growing EDs in County Galway 2006 – 2011**

ED Number & Name	Persons 2006	Persons 2011	Change 2006 - 2011	
			No	%
027 Derrycunlagh	39	60	21	53.8
026 Cushkillary	177	249	72	40.7
182 Ballinderry	334	468	134	40.1
133 Tiaquin	479	660	181	37.8
112 Graigabbey	294	393	99	33.7
155 Cill Chuimín	122	162	40	32.8
117 Kilconierin	398	527	129	32.4
108 Colmanstown	93	120	27	29.0
119 Killogilleen	640	818	178	27.8
131 Movode	199	254	55	27.6
092 Killeely	1,257	1,596	339	27.0
089 Drumacoo	997	1,239	242	24.3
213 Ryehill	569	707	138	24.3
025 Clifden	2,118	2,613	495	23.4
107 Cloonkeen	348	429	81	23.3
124 Lackalea	311	383	72	23.2
179 Abbey West	577	710	133	23.1
060 Oranmore	3,523	4,325	802	22.8
049 Clarinbridge	2,666	3,271	605	22.7
046 An Carn Mór	2,138	2,609	471	22.0
201 Kilcoona	512	619	107	20.9
099 Skehanagh	395	477	82	20.8
109 Craughwell	1,363	1,640	277	20.3
156 Leitir Breacáin	208	250	42	20.2
044 Bearna (part)	3,024	3,630	606	20.0

**Table 12 EDs most in Decline in County Galway 2006 - 2011**

ED Number & Name	Persons 2006	Persons 2011	Change 2006 - 2011	
			No	%
032 Inishbofin	199	160	-39	-19.6
165 Coos	136	111	-25	-18.4
160 An Ros	104	94	-10	-9.6
034 Maíros	370	337	-33	-8.9
029 Doonloughan	103	94	-9	-8.7
024 Cleggan	287	263	-24	-8.4
096 Kiltomas	90	83	-7	-7.8
170 Kilmalinoge	236	218	-18	-7.6
071 Curraghmore	171	158	-13	-7.6
016 Kiltormer	574	531	-43	-7.5
068 Ballynakill	451	419	-32	-7.1
067 Ballymoe	428	399	-29	-6.8
017 Kylemore	172	161	-11	-6.4
070 Creggs	392	367	-25	-6.4
078 Shankill	306	287	-19	-6.2
008 Clontuskert	226	212	-14	-6.2
196 Dunmore South	861	812	-49	-5.7
100 Aille	412	389	-23	-5.6
018 Laurencetown	371	351	-20	-5.4
069 Boyounagh	271	257	-14	-5.2
168 Eyrecourt	477	454	-23	-4.8
174 Pallas	420	401	-19	-4.5
110 Derrylaur	113	108	-5	-4.4
153 An Chorr	162	155	-7	-4.3
164 Ballyglass	169	162	-7	-4.1
090 Gort	2,782	2,671	-111	-4.0

## Appendix 1 Population of EDs in County Galway 2006 & 2011 & Population Change

Population	Persons 2006	Persons 2011	Change 2006 - 2011	
			No.	%
001 Ballinasloe Urban	6,049	6,449	400	6.6
002 Abbeygormacan	415	416	1	0.2
003 Ahascragh	628	637	9	1.4
004 Aughrim	573	595	22	3.8
005 Ballinasloe Rural	571	599	28	4.9
006 Ballymacward	319	315	-4	-1.3
007 Clonfert	447	457	10	2.2
008 Clontuskert	226	212	-14	-6.2
009 Kellysgrove	343	387	44	12.8
010 Kilconnell	680	670	-10	-1.5
011 Killaan	520	500	-20	-3.8
012 Killallaghtan	432	436	4	0.9
013 Killoran	286	279	-7	-2.4
014 Killure	800	802	2	0.3
015 Kilmacshane	230	245	15	6.5
016 Kiltormer	574	531	-43	-7.5
017 Kylemore	172	161	-11	-6.4
018 Laurencetown	371	351	-20	-5.4
019 Lismanny	241	239	-2	-0.8
020 Oatfield	412	435	23	5.6
021 Ballynakill	527	593	66	12.5
022 Binn an Choire	250	252	2	0.8
023 Bunowen	435	460	25	5.7
024 Cleggan	287	263	-24	-8.4
025 Clifden	2,118	2,613	495	23.4
026 Cushkillary	177	249	72	40.7
027 Derrycunlagh	39	60	21	53.8
028 Derrylea	209	249	40	19.1
029 Doonloughan	103	94	-9	-8.7
030 Errislannan	230	229	-1	-0.4
031 An Uillinn	99	103	4	4.0
032 Inishbofin	199	160	-39	-19.6
033 An Cnoc Buí	798	853	55	6.9
034 Maíros	370	337	-33	-8.9
035 Abhainn Ghabhla	313	301	-12	-3.8
036 Rinvyle	1,280	1,330	50	3.9
037 Cloch na Rón	393	459	66	16.8
038 Sillerna	446	441	-5	-1.1
039 Scainimh	619	684	65	10.5
040 Eanach Dhúin	1,710	1,860	150	8.8



Population	Persons 2006	Persons 2011	Change 2006 - 2011	
			No.	%
041 Aughrim	1,072	1,215	143	13.3
042 Baile an Teampaill (part)	1,393	1,462	69	5.0
043 Ballynacourty	1,076	1,162	86	8.0
044 Bearna (part)	3,024	3,630	606	20.0
045 Belleville	502	576	74	14.7
046 An Carn Mór	2,138	2,609	471	22.0
047 Ceathrú an Bhrúnaigh (part)	881	918	37	4.2
048 Baile Chláir	1,853	2,042	189	10.2
049 Clarinbridge	2,666	3,271	605	22.7
050 Deerpark	1,169	1,314	145	12.4
051 Na Forbacha	1,239	1,312	73	5.9
052 Galway Rural (part)	129	126	-3	-2.3
053 Árainn	1,225	1,251	26	2.1
054 Cill Chuimin	1,304	1,315	11	0.8
055 Cill Aithnín	963	1,000	37	3.8
056 Leacach Beag	1,236	1,403	167	13.5
057 Liscananaun	1,348	1,432	84	6.2
058 Lisín an Bhealaigh	911	1,005	94	10.3
059 Maigh Cuilinn	1,772	2,008	236	13.3
060 Oranmore	3,523	4,325	802	22.8
061 Sailearna	1,362	1,448	86	6.3
062 Sliabh an Aonaigh	690	763	73	10.6
063 An Spidéal	1,357	1,450	93	6.9
064 Stradbally	1,045	1,207	162	15.5
065 Tulaigh Mhic Aodháin	1,755	1,985	230	13.1
066 Ballinastack	327	324	-3	-0.9
067 Ballymoe	428	399	-29	-6.8
068 Ballynakill	451	419	-32	-7.1
069 Boyounagh	271	257	-14	-5.2
070 Creggs	392	367	-25	-6.4
071 Curraghmore	171	158	-13	-7.6
072 Glennamaddy	862	867	5	0.6
073 Island	285	286	1	0.4
074 Kilcroan	539	561	22	4.1
075 Kiltullagh	180	198	18	10.0
076 Raheen	490	492	2	0.4
077 Scregg	221	236	15	6.8
078 Shankill	306	287	-19	-6.2
079 Templetogher	408	393	-15	-3.7
080 Toberroe	316	321	5	1.6
081 Ardamullivan	576	587	11	1.9
082 Ardrahan	480	540	60	12.5



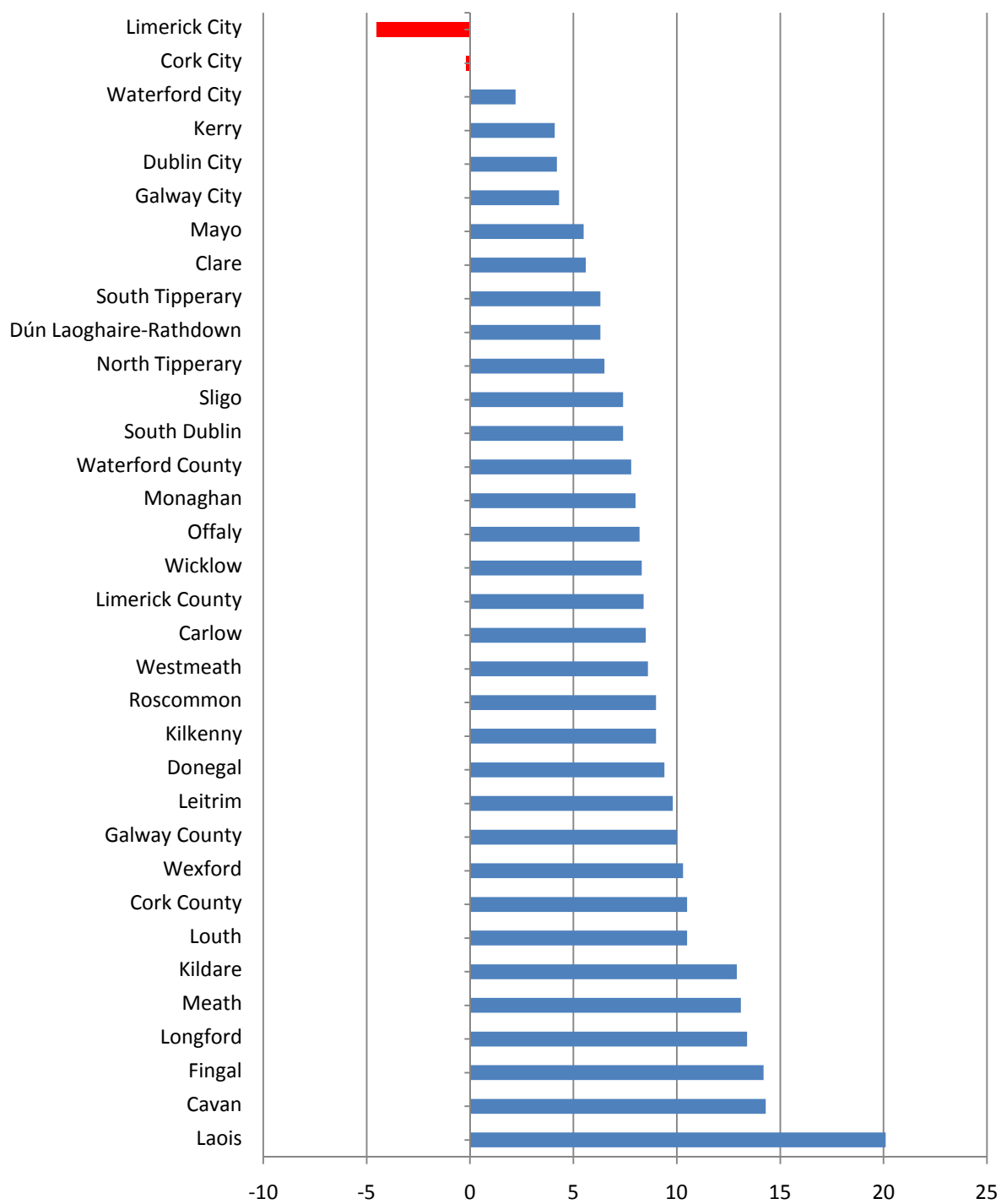
Population	Persons 2006	Persons 2011	Change 2006 - 2011	
			No.	%
083 Ballycahalan	190	222	32	16.8
084 Beagh	603	718	115	19.1
085 Cahermore	454	515	61	13.4
086 Cappard	102	99	-3	-2.9
087 Castletaylor	486	574	88	18.1
088 Doorus	684	748	64	9.4
089 Drumacoo	997	1,239	242	24.3
090 Gort	2,782	2,671	-111	-4.0
091 Kilbeacanty	285	318	33	11.6
092 Killeely	1,257	1,596	339	27.0
093 Killeenavarra	651	746	95	14.6
094 Killinny	399	429	30	7.5
095 Kiltartan	670	743	73	10.9
096 Kiltomas	90	83	-7	-7.8
097 Kinvarra	1,160	1,351	191	16.5
098 Rahasane	279	329	50	17.9
099 Skehanagh	395	477	82	20.8
100 Aille	412	389	-23	-5.6
101 Athenry	4,042	4,828	786	19.4
102 Ballynagar	202	195	-7	-3.5
103 Bracklagh	427	460	33	7.7
104 Bullaun	213	254	41	19.2
105 Cappalusk	357	384	27	7.6
106 Castleboy	491	550	59	12.0
107 Cloonkeen	348	429	81	23.3
108 Colmanstown	93	120	27	29.0
109 Craughwell	1,363	1,640	277	20.3
110 Derrylaur	113	108	-5	-4.4
111 Drumkeary	568	573	5	0.9
112 Graigabbey	294	393	99	33.7
113 Grange	696	739	43	6.2
114 Greethill	809	920	111	13.7
115 Kilchreest	316	312	-4	-1.3
116 Kilconickny	599	655	56	9.3
117 Kilconierin	398	527	129	32.4
118 Killimor	312	331	19	6.1
119 Killogilleen	640	818	178	27.8
120 Kilmeen	599	631	32	5.3
121 Kilreekill	281	325	44	15.7
122 Kiltesskill	310	368	58	18.7
123 Kiltullagh	648	702	54	8.3
124 Lackalea	311	383	72	23.2

Population	Persons 2006	Persons 2011	Change 2006 - 2011	
			No.	%
125 Leitrim	404	457	53	13.1
126 Loughatorick	34	36	2	5.9
127 Loughrea Rural	885	873	-12	-1.4
128 Loughrea Urban	4,532	5,062	530	11.7
129 Marblehill	371	361	-10	-2.7
130 Mountain	256	307	51	19.9
131 Movode	199	254	55	27.6
132 Raford	381	440	59	15.5
133 Tiaquin	479	660	181	37.8
134 Woodford	500	493	-7	-1.4
135 Annagh	343	375	32	9.3
136 Ballynakill	506	592	86	17.0
137 Caltra	351	365	14	4.0
138 Castleblakeney	475	526	51	10.7
139 Castlefrench	479	524	45	9.4
140 Clonbrock	505	553	48	9.5
141 Cloonkeen	280	310	30	10.7
142 Cooloo	515	542	27	5.2
143 Derryglassaun	792	867	75	9.5
144 Killeroran	1,314	1,289	-25	-1.9
145 Killian	311	340	29	9.3
146 Mount Bellew	1,722	1,874	152	8.8
147 Mounthazel	454	496	42	9.3
148 Taghboy	209	228	19	9.1
149 Camas	367	358	-9	-2.5
150 An Fhairche	1,006	1,098	92	9.1
151 Conga	573	561	-12	-2.1
152 An Crompán	2,294	2,505	211	9.2
153 An Chorr	162	155	-7	-4.3
154 Garmna	1,288	1,359	71	5.5
155 Cill Chuimín	122	162	40	32.8
156 Leitir Breacáin	208	250	42	20.2
157 Letterfore	288	306	18	6.3
158 Leitir Móir	875	908	33	3.8
159 Oughterard	2,563	2,604	41	1.6
160 An Ros	104	94	-10	-9.6
161 An Turlach	557	545	-12	-2.2
162 Wormhole	1,985	2,315	330	16.6
163 Abbeyville	252	280	28	11.1
164 Ballyglass	169	162	-7	-4.1
165 Coos	136	111	-25	-18.4
166 Derrew	156	166	10	6.4

Population	Persons 2006	Persons 2011	Change 2006 - 2011	
			No.	%
167 Drummin	369	369	0	0.0
168 Eyrecourt	477	454	-23	-4.8
169 Killimor	702	698	-4	-0.6
170 Kilmalinoge	236	218	-18	-7.6
171 Kilquain	291	318	27	9.3
172 Meelick	258	278	20	7.8
173 Moat	162	176	14	8.6
174 Pallas	420	401	-19	-4.5
175 Portumna	2,030	2,327	297	14.6
176 Tiranascragh	170	174	4	2.4
177 Tynagh	414	442	28	6.8
178 Abbey East	629	670	41	6.5
179 Abbey West	577	710	133	23.1
180 Addergoole	502	550	48	9.6
181 Annaghdown	1,244	1,381	137	11.0
182 Ballinderry	334	468	134	40.1
183 Ballinduff	621	705	84	13.5
184 Ballynapark	858	990	132	15.4
185 Beaghmore	288	331	43	14.9
186 Belclare	742	794	52	7.0
187 Carrownagur	379	445	66	17.4
188 Carrowevagh	398	457	59	14.8
189 Claretuam	980	1,032	52	5.3
190 Clonbern	370	396	26	7.0
191 Cloonkeen	451	460	9	2.0
192 Cummer	936	1,079	143	15.3
193 Donaghpatrick	538	563	25	4.6
194 Doonbally	503	580	77	15.3
195 Dunmore North	548	597	49	8.9
196 Dunmore South	861	812	-49	-5.7
197 Foxhall	558	591	33	5.9
198 Headford	1,349	1,489	140	10.4
199 Hillsbrook	646	692	46	7.1
200 Kilbennan	361	376	15	4.2
201 Kilcoona	512	619	107	20.9
202 Killeany	534	610	76	14.2
203 Killeen	648	658	10	1.5
204 Killererin	714	732	18	2.5
205 Killoower	729	851	122	16.7
206 Killursa	959	1,076	117	12.2
207 Kilmoylan	896	1,040	144	16.1
208 Kilshanvy	384	394	10	2.6

Population	Persons 2006	Persons 2011	Change 2006 - 2011	
			No.	%
209 Levally	366	360	-6	-1.6
210 Milltown	538	633	95	17.7
211 Monivea	638	655	17	2.7
212 Moyne	640	678	38	5.9
213 Ryehill	569	707	138	24.3
214 Toberadosh	353	382	29	8.2
215 Tuam Rural	4,622	5,520	898	19.4
216 Tuam Urban	2,997	3,304	307	10.2
County Galway	159,256			

## Appendix 2 % Population Change of all Local Authority Areas



### Appendix 3 Average Annual Estimated Net Migration (Rate per 1,000 Pop.) for each Local Authority Area 2011

